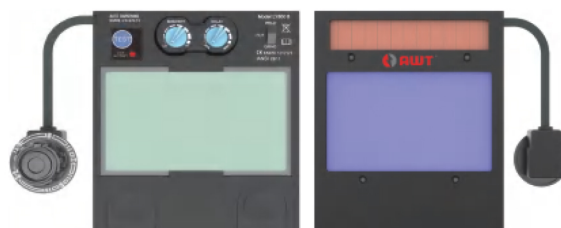


# AWT-OK-800B



## LY800B



Optical Class	1/1/1/2
Cartridge Size	133×114×10mm
Viewing Area	100×59.5mm(3.94"×2.34")
Light State	DIN3.5
Dark State	DIN5~9/9~13
Shade Control	External & Stepless
Switching Time	1/10000S±20%
Sensitivity Control	Internal & Stepless
Delay Time	0.1S~0.8S
Power Supply	Li-battery&Solar
Rated Capacity Of Li-Battery	1200mAh
Replaceable Battery	Yes
Arc Sensor	4
Low Amperage TIG Rated	≥5amps
UV/IR Protection	DIN13
Self Test	Yes
Low Battery	Yes
Grinding	Yes
Cuting	Yes